

SET MENU

Pasta
+350yen
(385yen)



Konana's Tea Set
こなな茶セット

A choice of Pasta

+

A choice of
Konana Tea (hot/iced)

Please select on
from the "Set Drink" column.

Pasta
+450yen
(495yen)



Konana's Deli Set
おばんざいセット

A choice of Pasta

+

Konana's Deli

+

Homemade Tofu

Pasta
+450yen
(495yen)



Soy Milk Pudding Set
豆乳プリンセット

A choice of Pasta

+

Konana's Deli

+

Soy Milk Pudding

SET DRINK

If you order pasta,
you can add a set drink for 300 yen.

+350yen
(385yen)

Original blend tea "Konana Tea"

●HOWARI (hot/iced) ●SARARI (hot/iced) ●YURURI (hot/iced)
Rooibos×lemon Grass Green Tea×Lemon Assam×Ginger

●KARARI (hot/iced) ●KURARI (hot/iced)
Ceylon×Peppermint Darjeeling×Iran Iran

●RABURI (hot/iced) ●FUWARI (hot/iced)
Assam×Cacao Roasted green tea×Orange

*Konana tea is available in pots.
See reverse side for details of blended contents.

●Apple juice ●Orange juice ●Iced Coffee



WA PASTA MENU

おだしのパスタ Dashi Pasta



Okra with ume plum and
baby sardine,
Tororo and Small shrimp
1060yen(1166yen)



Shio-koji (salt-malted rice)
Soup Stock Peperoncino
with Turnip and Eggplant
1160yen(1276yen)



Octopus and
Tosa Sweet Pepper with
Wasabi Dashi Butter
1110yen(1221yen)



Tororo and
soft-boiled egg with
Yuzu-kosho flavor
1210yen(1331yen)



Grated radish and
Pork with Yuzu
1360yen(1496yen)



Asari and
Maitake Mushrooms
with Asari Dashi Butter
1210yen(1331yen)



Mentaiko,
baby sardine and
Takana
1080yen(1188yen)



豆乳のパスタ Soy Milk Pasta



Small Shrimp and
Scallop Soy Milk Carbonara
1160yen(1276yen)



Mentaiko and Spinach
with Soy-Milk Carbonara
1180yen(1298yen)



Turnip and Spinach with
Shrimp Soy-Milk Cream
1110yen(1221yen)



Pork and Maitake mushroom
with Burdock Soy Cream
1260yen(1386yen)



Konana's
Soy Milk Carbonara
1360yen(1496yen)

醤油のパスタ Soy Sauce Pasta



Duck and White leek with
Sweet Soy Sauce
1180yen(1298yen)



Wild vegetables and
Chicken Soboro with
Soy Sauce Butter
1060yen(1166yen)



Asparagus, shrimp
and soft-boiled
with soy sauce
1280yen(1408yen)

味噌のパスタ Miso Pasta



Lotus root and Bacon with
Miso soup - Neapolitan
980yen(1078yen)



Salmon and Asparagus
with Miso Tomato Cream
1210yen(1331yen)



Steamed Chicken and
Edamame with Miso Cream
1160yen(1276yen)



Soboro Chicken and
Eggplant with Miso Tomato
1210yen(1331yen)

For customers with
food allergies or
who wish to have
other ingredients removed.

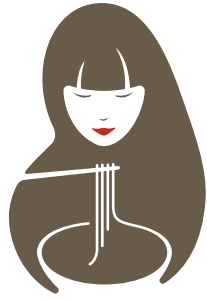
If you cannot read the code, please ask our staff for help.



左記QRコードより「特定食材の除去に関するポリシー」をご確認いただきまして、弊社の安全に関する
お願いにご了承いただけましたらスタッフへご希望をお申し付けください。(Language: 日本語・English・中文)

[Policy of the removal of specified ingredient]
Customers with food allergies are keen on removing specific ingredients. Please check for our "Policy of the removal of
specified ingredient" which is written on our website. You can connect our website by scanning this QR code.

【關於去除特定食物的政策】
有食物過敏的顧客與其他希望能去除某項原料的顧客，請掃描 QRCode，並參閱我司的官網上的「關於去除特定食物的政策」。



CAFE MENU

It is a great place for a mid-afternoon coffee break or a relaxing dessert after dinner.
Please spend a wonderful time with handmade sweetness that makes the most of the ingredients and the special Konana tea.

Recommend the Drink Set! The following drinks can be added to all sweetmeats for 350 yen.

• Various kinds of original blend "Konana tea" are available in a pot. • Orange juice • Apple juice • Iced Coffee

Homemade Soy Milk Pudding

Konana's homemade soy milk pudding has a soft and smooth melt-in-your-mouth taste that is addictive.
It is a must-try when you visit Konana.



Soy milk pudding with mixed berries

480yen (528yen)

Drink Set 830yen (913yen)



Soy milk pudding with Dark molasses and roasted soybean flour

480yen (528yen)

Drink Set 830yen (913yen)



Soy milk pudding with YAME matcha green tea sauce

480yen (528yen)

Drink Set 830yen (913yen)



Soy milk pudding with Unshu mikan orange sauce

480yen (528yen)

Drink Set 830yen (913yen)



Soy milk pudding with YAME hojicha green tea sauce

480yen (528yen)

Drink Set 830yen (913yen)

Konana's Pancake

Moist and fluffy pancakes made with a blend of rice flour and topped with Japanese ingredients with a gentle sweetness.
Wheat is also used in addition to rice flour.



Pancake with Caramel Banana (6)

750yen (825yen)

Drink Set 1100yen (1210yen)



Pancake with Red Bean Cheese Cream and Hojicha Ice Cream (7)

750yen (825yen)

Drink Set 1100yen (1210yen)



Pancake with Strawberry and Pistachio Ice Cream (8)

850yen (935yen)

Drink Set 1200yen (1320yen)

Tiramisu Parfait

Finished with a generous amount of mascarpone cream.
You can enjoy a variety of flavors such as soy milk pudding, soy milk cookies, fruit, red bean paste, and shiratama (rice flour dumpling).



Strawberry Tiramisu Parfait

890yen (979yen)

Drink Set 1240yen (1364yen)



Hojicha / Matcha Tiramisu Parfait

780yen (858yen)

Drink Set 1130yen (1243yen)



Konana's Original Blend Tea

The "Konana Tea" is served in a generous pot with a choice of hot or iced.



"KARARI" tea (hot/iced)
Ceylon × Peppermint

500yen
(550yen)



"KURARI" tea (hot/iced)
Darjeeling × Iran Iran

500yen
(550yen)



"SARARI" tea (hot/iced)
Green Tea × Lemon

500yen
(550yen)



"FUWARI" tea (hot/iced)
Roasted green tea × Orange

500yen
(550yen)



"HOWARI" tea (hot/iced)
Rooibos × Lemon Grass

500yen
(550yen)



"YURURI" tea (hot/iced)
Assam × Ginger

500yen
(550yen)



"RABURI" tea (hot/iced)
Assam × Cacao

500yen
(550yen)



Coffee & Soft drinks

Iced coffee 400yen (440yen)

Apple juice 430yen (473yen)

Orange juice 430yen (473yen)

Alcoholic

Beer (Asahi 334ml) 530yen (583yen)