

SET MENU

Pasta
+355yen
(390yen)



Konana's Tea Set
こなな茶セット

A choice of Pasta

+

A choice of
Konana Tea (hot/iced)

Please select on
from the "Set Drink" column.

Pasta
+500yen
(550yen)



Konana's Deli Set
おばんざいセット

A choice of Pasta

+

Konana's Deli

+

Homemade Tofu

Pasta
+500yen
(550yen)



Soy Milk Pudding Set
豆乳プリンセット

A choice of Pasta

+

Konana's Deli

+

Soy Milk Pudding

SET DRINK If you order pasta,
you can add a set drink for 300 yen.

+355yen
(390yen)

Original blend tea "Konana Tea"

●HOWARI (hot/iced) ●SARARI (hot/iced) ●YURURI (hot/iced)
Rooibos×Lemon Grass Green Tea×Lemon Assam×Ginger

●KARARI (hot/iced) ●KURARI (hot/iced)
Ceylon×Peppermint Darjeeling×Iran Iran

●RABURI (hot/iced) ●FUWARI (hot/iced)
Assam×Cacao Roasted green tea×Orange

*Konana tea is available in pots.
See reverse side for details of blended contents.



●Apple juice ●Orange juice ●Iced Coffee

WA PASTA MENU

Enjoy carefully selected ingredients from Japan's four seasons.
All of Konana's Japanese pastas are based on Japanese soup stocks, or "Dashi."
We cherish the ingredients and enjoy the seasons.
Konana's pasta is made with Japanese spirit.



Soy Milk Carbonara
Topped with
Funagata Mushroom
1482yen (1630yen)



Duck and
Maitake Mushroom
with Soy Milk Cream
1255yen (1380yen)



Mentaiko,
Baby Sardine and
Takana
991yen (1090yen)



Grated Radish and
Pork with Yuzu
1364yen (1500yen)



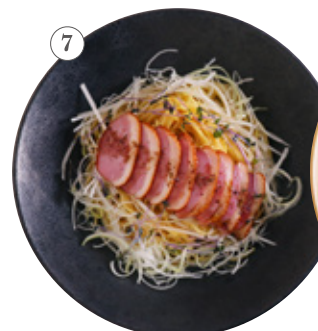
Fresh Pasta
White Bolognese Made
with Ground Awaji Beef,
White Sesame, and Soy Milk
1528yen (1680yen)



Fresh Pasta
Black Bolognese Made
with Ground Awaji Beef
and Hatcho Miso
1491yen (1640yen)



Fresh Pasta
Due to the cooking time
required, there may be
variations in serving
times. We appreciate
your understanding.



Duck and
White leek with
Sweet Soy Sauce
1200 yen (1320yen)



Asparagus, Shrimp and
Soft-boiled Egg with
Soy Sauce
1391yen (1530yen)



Steamed Chicken and
Edamame with
Miso Cream
1091yen (1200yen)



Octopus and
Tosa Sweet Pepper with
Wasabi Dashi Butter
1291yen (1420yen)



Konana's
Soy Milk Carbonara
1391yen (1530yen)



Soboro Chicken and
Eggplant with
Miso Tomato
1182yen (1300yen)



Lotus root and Bacon with
Miso Soup
Neapolitan
1582yen (1740yen)

Konana's OVEN-BAKED DISH



Keema Curry
Gratin / Doria with
Half Boiled Egg and Eggplant
1091yen (1200yen)



Bolognese
Gratin / Doria with
Eggplant
1182 yen (1300yen)



Mentaiko Soy Milk
Gratin / Doria with
Shrimp and Spear Squid
1182 yen (1300yen)



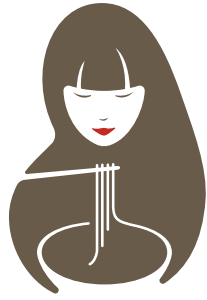
Rice Gratin with
Hamburger Steak and Demi-glace Sauce
1500yen (1650yen)



食物アレルギー又はその他食材のお取り除きをご希望されるお客様へ
左記QRコードより「特定食材の除去に関するポリシー」をご確認いただきまして、弊社の安全に関する
お願いにご了承いただけましたらスタッフへご希望をお申し付けください。(Language: 日本語・English・中文)
コードが読み取れないお客様はスタッフまでお声掛けください。

[Policy of the removal of specified ingredient]
Customers with food allergies are keen on removing specific ingredients. Please check for our "Policy of the removal of specified ingredient"
which is written on our website. You can connect our website by scanning this QR code.

【關於去除特定食物的政策】
有食物過敏的顧客與其他希望能去除某項原料的顧客，請掃描 QRCode，並參閱我司的官網上的「關於去除特定食物的政策」。



CAFE MENU

It is a great place for a mid-afternoon coffee break or a relaxing dessert after dinner.
Please spend a wonderful time with handmade sweetness that makes the most of the ingredients and the special Konana tea.

Recommend the Drink Set! The following drinks can be added to all sweetmeats for 350yen.

• Various kinds of original blend "Konana tea" are available in a pot. • Orange juice • Apple juice • Iced Coffee

Homemade Soy Milk Pudding

Konana's homemade soy milk pudding has a soft and smooth melt-in-your-mouth taste that is addictive.
It is a must-try when you visit Konana.



Soy milk pudding with mixed berries

500yen (550yen)

Drink Set 855yen (940yen)



Soy milk pudding with Dark molasses and roasted soybean flour

500yen (550yen)

Drink Set 855yen (940yen)



Soy milk pudding with YAME matcha green tea sauce

500yen (550yen)

Drink Set 855yen (940yen)



Soy milk pudding with Unshu mikan orange sauce

500yen (550yen)

Drink Set 855yen (940yen)



Soy milk pudding with YAME hojicha green tea sauce

500yen (550yen)

Drink Set 855yen (940yen)



Pancake with Caramel Banana

855yen (940yen) Drink Set 1210yen (1330yen)

The sweetness of banana and soy milk ice cream combined with the bitterness of caramel is a good combination.
Enjoy the texture of the brown sugar walnuts as well.

6

Konana's Pancake

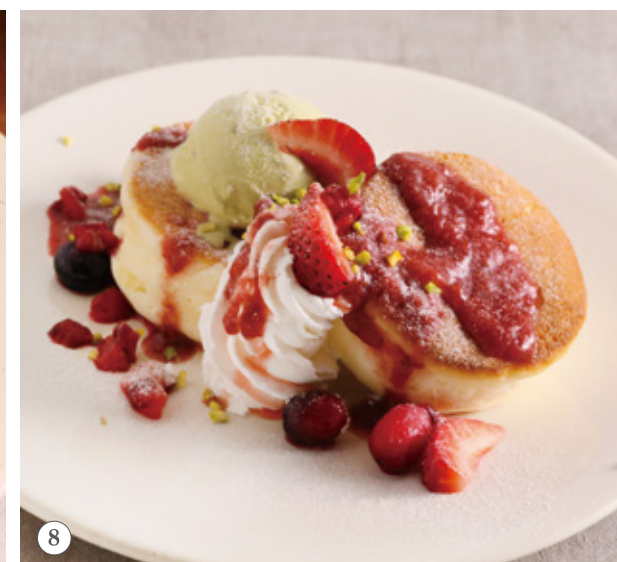
Moist and fluffy pancakes made with a blend of rice flour and topped with Japanese ingredients with a gentle sweetness.
Wheat is also used in addition to rice flour.



Pancake with Red Bean Cheese Cream and Hojicha Ice Cream

800yen (880yen) Drink Set 1155yen (1270yen)

A good balance of aromatic hojicha tea, sourness of cheese cream and sweetness of red bean paste.



Pancake with Strawberry and Pistachio Ice Cream

873yen (960yen) Drink Set 1228yen (1350yen)

A combination of naturally sweet strawberry sauce and rich pistachio ice cream.



Konana's Original Blend Tea

The "Konana Tea" is served in a generous pot with a choice of hot or iced.

	"KARARI" tea (hot/iced) Ceylon × Peppermint	500yen (550yen)	
	"KURARI" tea (hot/iced) Darjeeling × Iran Iran	500yen (550yen)	
	"SARARI" tea (hot/iced) Green Tea × Lemon	500yen (550yen)	
	"FUWARI" tea (hot/iced) Roasted green tea × Orange	500yen (550yen)	
	"HOWARI" tea (hot/iced) Rooibos × Lemon Grass	500yen (550yen)	
	"YURURI" tea (hot/iced) Assam × Ginger	500yen (550yen)	
	"RABURI" tea (hot/iced) Assam × Cacao	500yen (550yen)	

Coffee & Soft drinks

Coffee (hot/iced)	500yen (550yen)
Apple juice	500yen (550yen)
Orange juice	500yen (550yen)

Alcohol

Beer (Asahi 334ml)	546yen (600yen)
--------------------	-----------------