

PEANUTS D I N E R

A GREAT JOY IN LIFE IS DINNER

 GRAND
MENU



DINER'S **APPETIZER**

Tartare
 (Ratatouille Paste)
 with Rye Bread

1,080yen (incl tax 1,188yen)

Vegetables
 & Herbs Salad
 with Leaves
 from Awaji

1,080yen (incl tax 1,188yen)



Smoked Salmon
 with Herb Sour Cream
 Served on Orange & Grapefruit

1,930yen (incl tax 2,123yen)

Burrata Cheese & Ham
 with Strawberries

1,920yen (incl tax 2,112yen)



DINER'S **SIDE DISH**

Woodstock's
 Nest

1,080yen
 (incl tax 1,188yen)

Rye Bread

300yen
 (incl tax 330yen)



 DINER'S
PIZZA

Snoopy's Margherita

1,680yen (incl tax 1,848yen)



Dad's Spicy Diavola

1,880yen (incl tax 2,068yen)



Beagle Scout's Bismarck

2,180yen (incl tax 2,398yen)

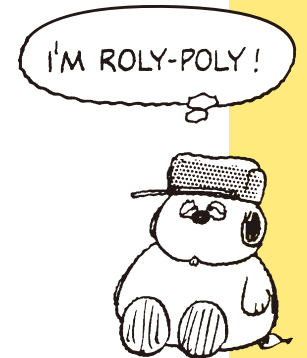




 DINER'S
PIZZA

Olaf's Quattro Formaggi

2,040yen (incl tax 2,244yen)



Charlie Brown's Special Pizza

2,680yen (incl tax 2,948yen)





DINER'S PASTA

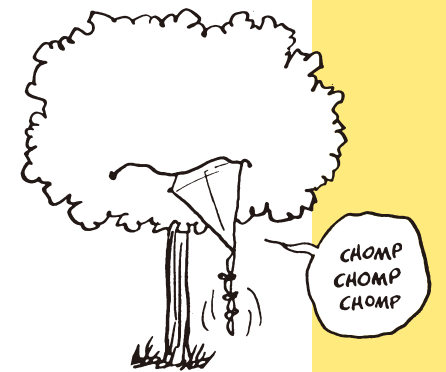
Pigpen's "Great Pride" Carbonara

1,820yen (incl tax 2,002yen)



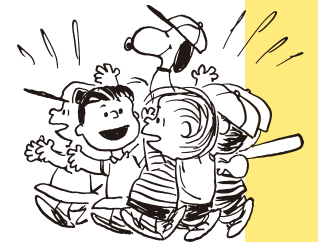
Kite eating tree's Genovese

1,780yen (incl tax 1,958yen)



Peanuts Gang's Awajigyu(Beef) Bolognese Topped with Burrata Cheese

2,280yen (incl tax 2,508yen)

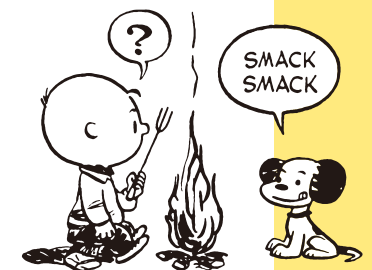




DINER'S SPECIAL MAIN

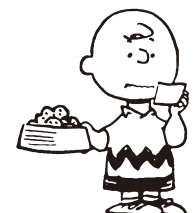
Salmon Grilled with Basil Cheese
Served with Beets Yoghurt Sauce

2,430yen (incle tax 2,673yen)



Kobe Beef Hamburger Steak
with Awaji Onion Sauce

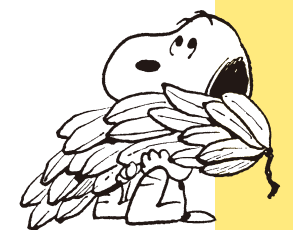
3,200yen (incle tax 3,520yen)



DINER'S DESSERT

Charlie Brown's Choco-Banana Baked Alaska

920yen (incl tax 1,012yen)



Woodstock and Friends' Mille Crepe

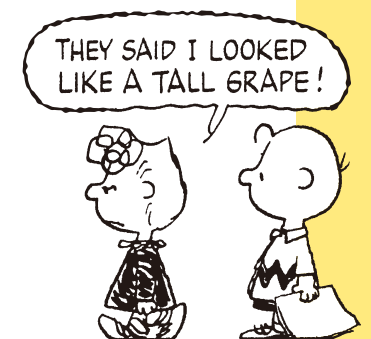
1,050yen (incl tax 1,155yen)



DINER'S DESSERT

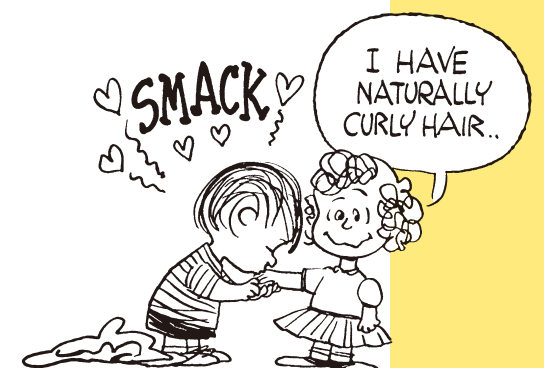
Sally's Purple Dress Sundae

1,050yen (incl tax 1,155yen)



Frieda's Pink Peach Melba Sundae

1,080yen (incl tax 1,188yen)





 DINER'S
DRINK

MILKSHAKE

Peanuts Butter Milkshake

890yen (incl tax 979yen)

Choco-chips Milkshake

890yen (incl tax 979yen)

LEMONADE

Lucy's Lemonade

780yen (incl tax 858yen)

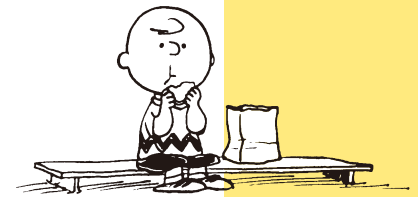
ROOTBEER

Rootbeer

780yen
(incl tax 858yen)

Rootbeer Float

860yen
(incl tax 946yen)



COFFEE

KOBE Evian Coffee
(HOT/ICE)

630yen (incl tax 693yen)

Café au lait
(HOT/ICE)

680yen (incl tax 748yen)

TEA

Organic Tea
(HOT)

730yen (incl tax 803yen)

(ICE)

630yen (incl tax 693yen)

Ginger Twist
(HOT)

740yen (incl tax 814yen)

Organic Mint Meringue
(HOT)

740yen (incl tax 814yen)

SOFT DRINK

Red Grape Juice(Merlot)

840yen (incl tax 924yen)

White Grape Juice(Sauvignon Blanc)

840yen (incl tax 924yen)

Orange Juice

700yen (incl tax 770yen)

Apple Juice

700yen (incl tax 770yen)

Mango Juice

700yen (incl tax 770yen)

Arima Cider

740yen (incl tax 814yen)

Coke

630yen (incl tax 693yen)

Ginger-ale

600yen (incl tax 660yen)



BEER

Draft Beer
(Sapporo Black Label)
800yen
(incl tax 880yen)

Brooklyn Lager
1,100yen
(incl tax 1,210yen)

Non-alcohol Beer
750yen
(incl tax 825yen)

BEER COCKTAIL

Shandy Gaff
800yen
(incl tax 880yen)

Panaché
800yen
(incl tax 880yen)

COCKTAIL

Gin / Vodka / Rum / Tequila / Cassis /
Framboise / Yogurt / Peach / Lychee
750yen
(incl tax 825yen)

Please choose your method of division from the following

Ginger Ale / Soda / Tonic / Cola / Orange Juice

WINE

SPARKLING

Espace Of Limari Brut

BOTTLE 4,000yen **GLASS 700yen**
(incl tax 4,400yen) (incl tax 770yen)

WHITE

NV Grand Cru Vineyards
California Chardonay

BOTTLE 4,800yen **GLASS 920yen**
(incl tax 5,280yen) (incl tax 1,012yen)

Broc Cellars/Love White
(Marsanne Roussanne)

BOTTLE 5,500yen
(incl tax 6,050yen)

Chateau St. Jean
Sonoma Chardonnay

BOTTLE 6,500yen
(incl tax 7,150yen)

RED

NV Grand Cru Vineyards
California Cabernet Sauvignon

BOTTLE 4,800yen **GLASS 920yen**
(incl tax 5,280yen) (incl tax 1,012yen)

DeLoach/Pinot Noir

BOTTLE 4,500yen
(incl tax 4,950yen)

Broc Cellars/Vine Starr
Zinfandel Sonoma

BOTTLE 6,500yen
(incl tax 7,150yen)

WINE COCKTAIL

Kir Imperial

820yen
(incl tax 902yen)

Kir

820yen
(incl tax 902yen)

Kitty

820yen
(incl tax 902yen)

Sparkling Lemonade

840yen
(incl tax 924yen)

Hugo

840yen
(incl tax 924yen)

American Lemonade

840yen
(incl tax 924yen)

NON-ALCOHOLIC
COCKTAIL

Saratoga Cooler

750yen
(incl tax 825yen)

Shirley Temple

750yen
(incl tax 825yen)

Mango Orange

750yen
(incl tax 825yen)

NOTICE

食物アレルギーまたはその他食材の お取り除きをご希望されるお客様へ



左記 QR コードより「特定食材
の除去に関するポリシー」をご
確認いただきまして、弊社の安
全に関するお願いにご了承いた
だけましたらスタッフへご希望
をお申し付けください。
(Language : 日本語・
English・中文)

コードが読み取れないお客様はスタッフまで
お声がけください。

[Policy of the removal of specified ingredient]
Customers with food allergies are keen on removing
specific ingredients. Please check for our "Policy of the
removal of specified ingredient" which is written on our
website. You can connect our website by scanning this
QR code.

【關於去除特定食物的政策】

有食物過敏的顧客與其他希望能去除某項原料的顧客，
請掃描 QR Code，並參閱我司的官網上的「關於去除特定
食物的政策」。



CASUAL COURSE
4,300yen~ (incl tax 4,730yen~)

HORS-D'OEUVRE Please select one of the following

- Vegitables & Herbs Salad with Leaves from Awaji
- Tartare(Ratatouille Paste)with Rye Bread

MAIN DISH Please select one of the following

- PASTA
- Pigpen’s “Great Pride” Carbonara
 - Kite eating tree’s Genovese
 - Peanuts Gang’s Awajigyu(Beef) Bolognese
Topped with Burrata Cheese(+ incl tax 330yen)

- PIZZA
- Snoopy’s Margherita
 - Beagle Scout’s Bismarck
 - Dad’s Spicy Diavola(+ incl tax 220yen)
 - Olaf’s Quattro Formaggi(+ incl tax 330yen)

DESSERT

- Woodstock and Friends’ Mille Crepe

CAFE
Coffee or Tea



PREFIX COURSE
5,300yen~ (incl tax 5,830yen~)

HORS-D'OEUVRE Please select one of the following

- Smoked Salmon with Herb Sour CreamServed on Orange & Grapefruit
- Burrata Cheese & Ham with Strawberries(+ incl tax 330yen)

MAIN DISH Please select one of the following

- | | |
|---|--|
| <p>PASTA</p> <ul style="list-style-type: none">•<u>Pigpen’s “Great Pride” Carbonara</u>•<u>Kite eating tree’s Genovese</u>•<u>Peanuts Gang’s Awajigyu(Beef)</u>
<u>Bolognese Topped</u>
<u>with Burrata Cheese(+ incl tax 330yen)</u> | <p>PIZZA</p> <ul style="list-style-type: none">•<u>Snoopy’s Margherita</u>•<u>Dad’s Spicy Diavola</u>•<u>Beagle Scout’s Bismarck</u>•<u>Olaf’s Quattro Formaggi(+ incl tax 330yen)</u>•<u>Charlie Brown’s Special Pizza</u>
<u>(+ incl tax 880yen)</u> |
|---|--|

- SPECIAL MAIN
- Salmon Grilled with Basil Cheese
Served with Beets Yoghurt Sauce
(+ incl tax 220yen)
 - Kobe Beef Hamburger Steak
with Awaji Onion Sauce
(+ incl tax 990yen)
 - Choice of bread or rice

DESSERT Please select one of the following

- Woodstock and Friends’ Mille Crepe
- Frieda’s Pink Peach Melba Sundae

- Sally’s Purple Dress Sundae

CAFE
Coffee or Tea

PEANUTS
DINNER COURSE
17:00-23:00 (LO21:30)



PEANUTS

LUNCH COURSE

11:00-17:00



PIZZA COURSE

3,280yen~ (incl tax 3,608yen~)

HORS-D'ŒUVRE Please select one of the following

- Vegitables & Herbs Salad with Leaves from Awaji
- Linus and starry sky soup
Soups are subject to change depending on the season.

PIZZA Please select one of the following

- Snoopy's Margherita
- Dad's Spicy Diavola
- Olaf's Quattro Formaggi(+ incl tax 330yen)

DESSERT

Snoopy's Ice Bowl

CAFE

Coffee or Tea

PASTA COURSE

3,280yen~ (incl tax 3,608yen~)

HORS-D'ŒUVRE Please select one of the following

- Vegitables & Herbs Salad with Leaves from Awaji
- Linus and starry sky soup
Soups are subject to change depending on the season.

PASTA Please select one of the following

- Pigpen's "Great Pride" Carbonara
- Kite eating tree's Genovese
- Peanuts Gang's Awajigyu(Beef) Bolognese Topped with Burrata Cheese(+ incl tax 330yen)

DESSERT

Snoopy's Ice Bowl

CAFE

Coffee or Tea

MAIN COURSE

3,980yen~ (incl tax 4,378yen~)

HORS-D'ŒUVRE Please select one of the following

- Vegitables & Herbs Salad with Leaves from Awaji
- Linus and starry sky soup
Soups are subject to change depending on the season.

MAIN Please select one of the following

- Salmon Grilled with Basil Cheese
Served with Beets Yoghurt Sauce (+ incl tax 220yen)
- Kobe Beef Hamburger Steak with Awaji Onion Sauce
(+ incl tax 990yen)
- Choice of bread or rice

DESSERT

Snoopy's Ice Bowl

CAFE

Coffee or Tea



PEANUTS DINER

A GREAT JOY IN LIFE IS DINNER